

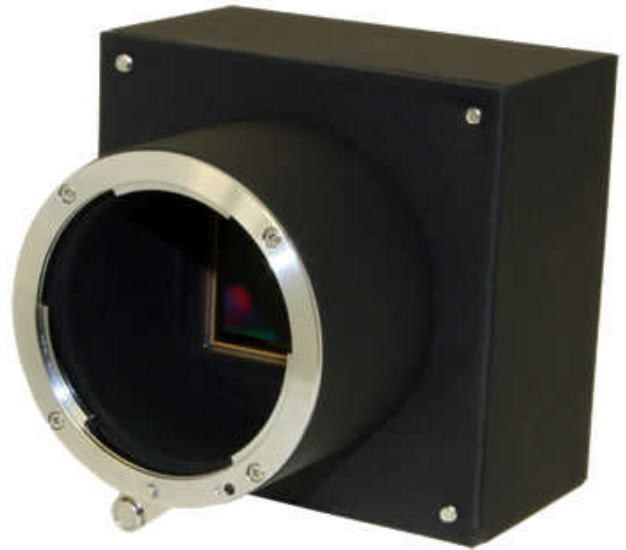


# SILICON VIDEO® 20C-CL & 20M-CL

20 Megapixel Camera Link Cameras

## Image Sensor

- 20 megapixel monochrome sensor in SV20M-CL
- 20 megapixel RGB bayer pattern color sensor in SV20C-CL
- 5120 by 3840 pixels
- 12 bits per pixel
- 6.4  $\mu\text{m}$  by 6.4  $\mu\text{m}$  pixel size
- 32.77 by 24.58 mm image size
- Pipelined global shutter
- 30 frames per second at maximum resolution
- 66 dB dynamic range
- 8.3 Volts/Lux-sec sensitivity



## Camera Specifications

- Control for gain, exposure, area of interest, subsampling, left/right and top/bottom image flip
- Asynchronous reset with strobe output
- 80-Bit camera link interface
- Camera size: 76.2 x 76.2 x 89.3 mm (3 x 3 x 3.52 in.)
- Infrared cut filter for SV20C-CL
- Power: 12 VDC @ 500 mA. Optional power supply
- Optional F-Mount Lens
- Camera weight: 384 grams
- 0°C to +70°C
- RoHS compliant

## PIXCI® Frame Grabbers for 80-Bit Camera Link Cameras

PIXCI® E4G2 PCIe x4 Gen 2

PIXCI® E8 PCIe x8 Gen 1.1

PIXCI® e104x4 Gen 2 PCIe 104

## EPIX SOFTWARE Support -

Supported by XCAP-Lite (no charge with camera purchase), XCAP-Ltd, XCAP-Std, XCLIB, and XCLIBIPL. Compatible with WIN 8, 7, Vista, XP, 2K; and LINUX.

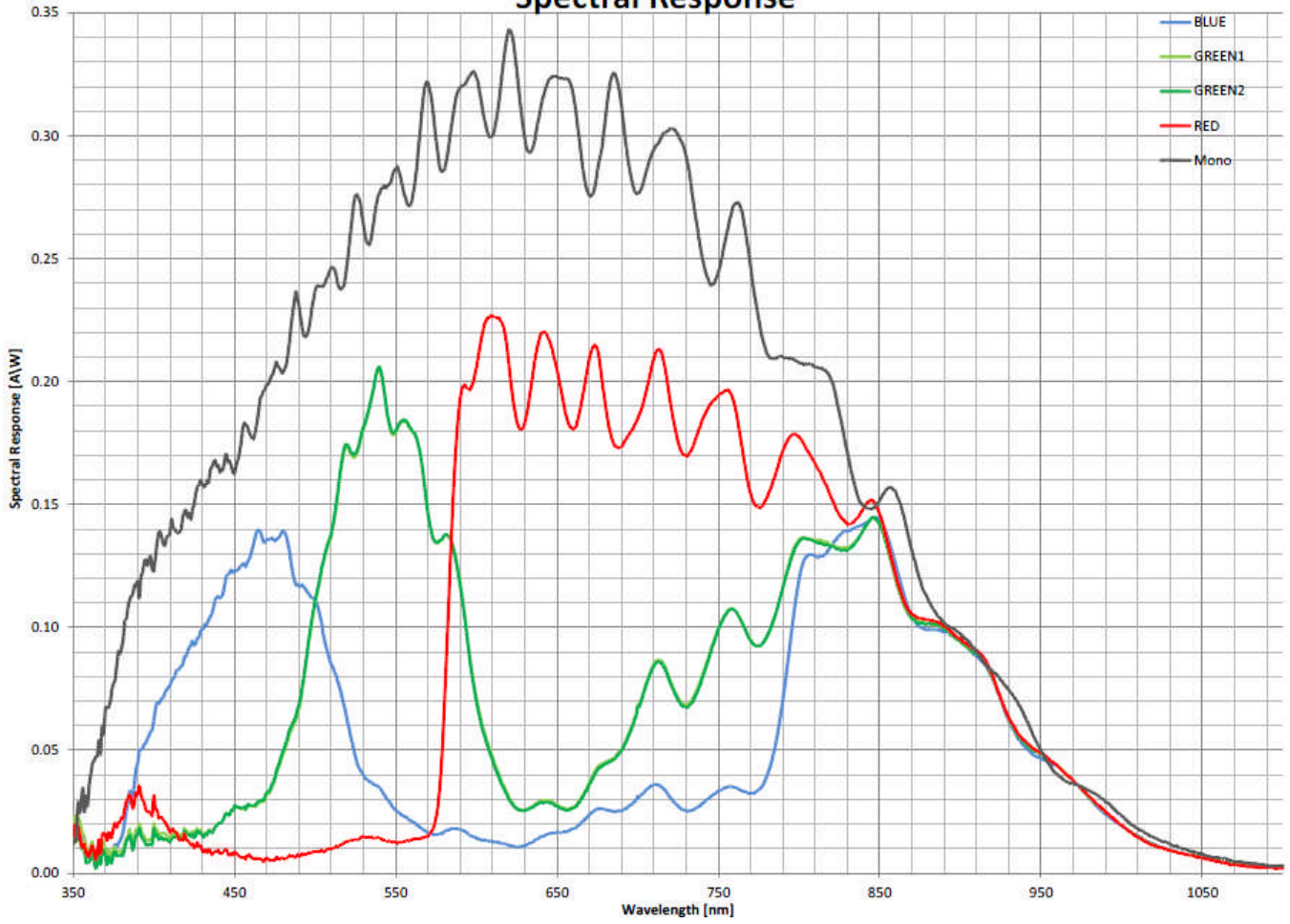
## Software

- Image sequence capture and save
- Triggered image sequence capture
- Image processing, measurement, and analysis optional
- Control of all camera registers
- Programmer libraries optional
- Image processing and analysis libraries optional
- Windows & Linux, 32 & 64-bit

SAIS 102 route de Limours - DOMAINE DE ST PAUL - BAT 14 - 78470 ST REMY LES CHEVREUSE

Tel : 09 54 16 23 53 - Fax : 09 59 16 23 53 - contact@sacasa.info - www.sacasa.info

### Spectral Response



### Quantum Efficiency

